

☐ SIGN: TO Canada
TO Downtown M.C.

☐ SIGN:
↑ Bridge to Bay Tr.

Storage or
"Wait" Area

BIKE PATH

Chartier Road

☐ "Share the Road" SIGN.

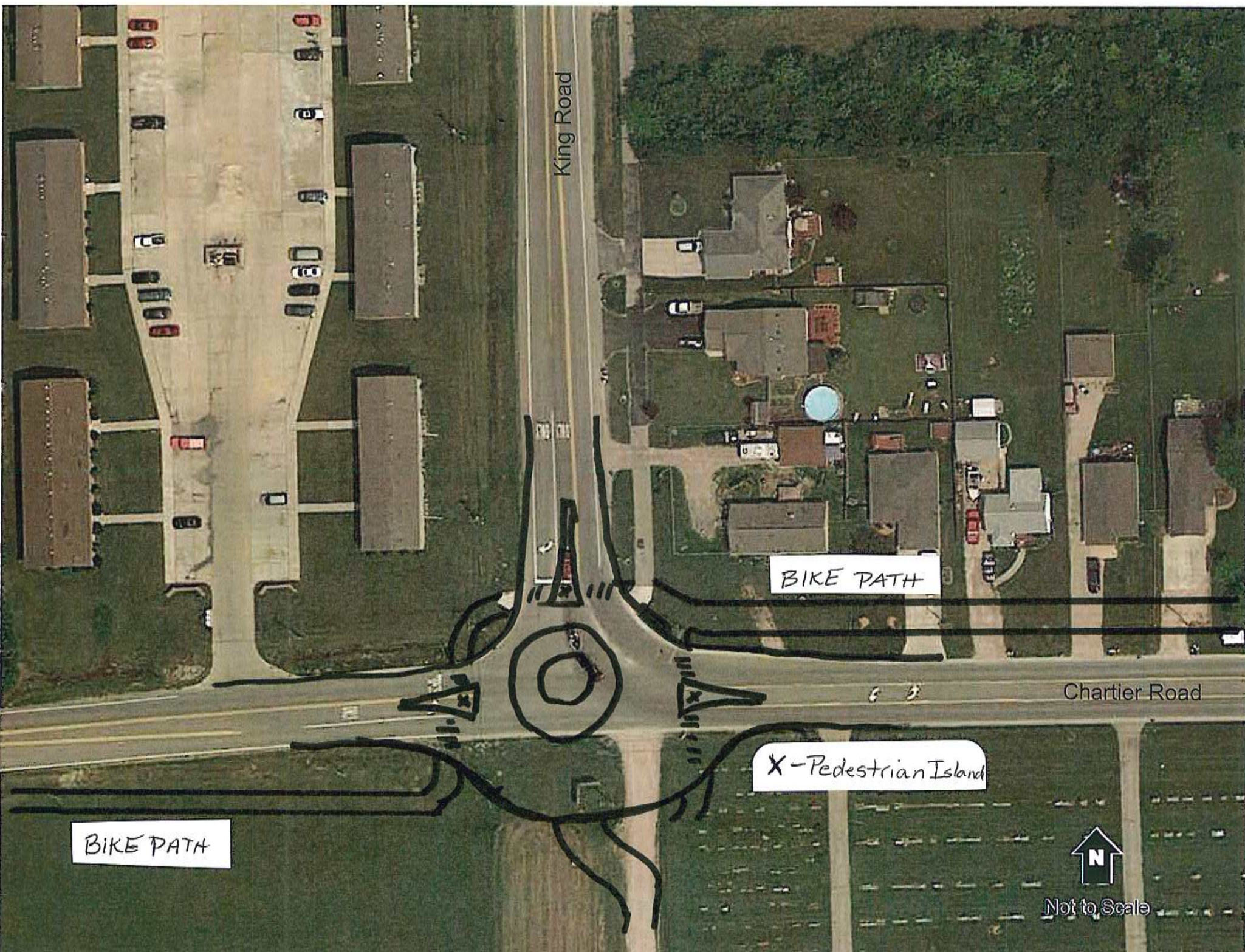
Blue Arrows:
Vehicle Traffic

Red: "Share the Road"
markings.

Parker Street (M-29)



Not To Scale



King Road

BIKE PATH

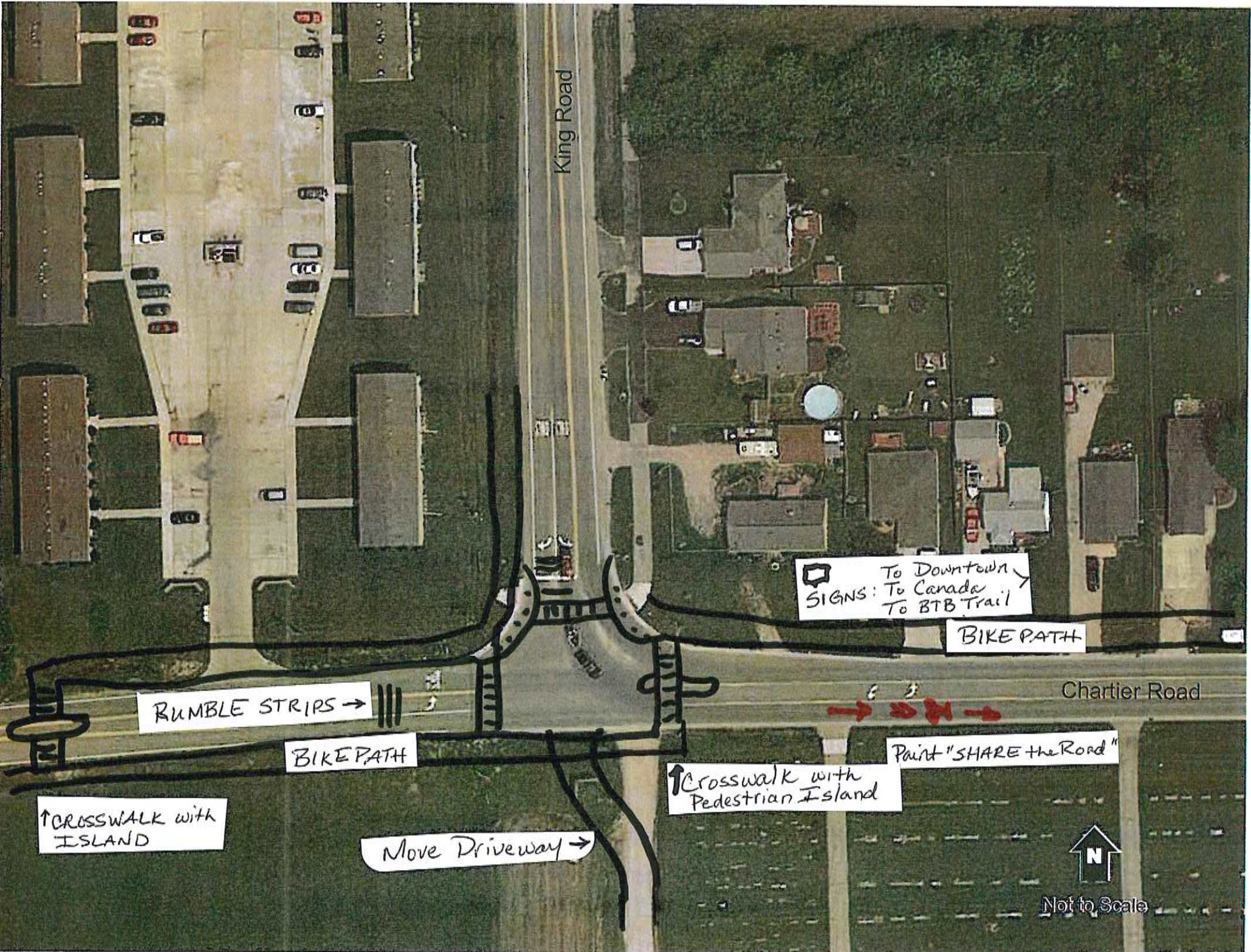
Chartier Road

X - Pedestrian Island

BIKE PATH



Not to Scale



King Road

To Downtown
SIGNS: To Canada
To BTB Trail

BIKE PATH

Chartier Road

RUMBLE STRIPS →

BIKE PATH

↑ CROSSWALK with ISLAND

Move Driveway →

↑ Crosswalk with Pedestrian Island

Paint "SHARE the Road"



Not to Scale